

LPHB-M

Rig-mounted posthole borer



Flexible and robust

The hydraulic rig-mounted Atlas Copco posthole borer is a robust and flexible tool suitable for all jobs in connection with the setting up of poles, piles, fences etc.

Connection

The rig-mounted posthole borer is to be mounted directly onto the dipper arm or under a top plate for quick-release couplings of small mini-excavators and skid-steer loaders weighing 1-3 t.

The Atlas Copco posthole borer is connected to the hydraulic take-out of the carrier machine by means of quick-release couplings. In case the machine gives more than the recommended oil flow or pressure, the number of revolutions or the maximum pressure setting is to be reduced. Alternatively, an Atlas Copco oil flow divider can be inserted.

Features

- Flexible mounting
- Robust construction
- Minimum maintenance
- Adjustable rotation speed
- Standard ½" BSP connection
- Quick change of auger without using any tools
- Boring of holes Ø 90-350 mm, max depth 1.5 m.



Technical data

Model	Part Number	Weight	Inside measure	Max pin Ø	Oil flow	Max working pressure	Torque at 140 bar	Speed of rotation	Max boring depth
		kg	mm	mm	l/min	bar	Nm	rpm	m
LPHB-M	1826 1014 37	31	161	50	20-60	160	450	80-200	1.5

Augers

Part Number	Ø	Length
	mm	mm
3378 0050 45	90	870
3378 0050 46	150	870
3378 0050 44	200	870
3378 0050 47	250	870
3378 0050 49	280	870
3378 0050 48	350	870

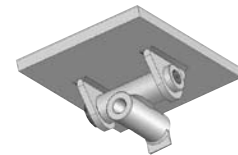


All augers have interchangeable bits and tips

Top plate (for quick coupler)

Part Number	Size (WxHxD)	Weight
	mm	kg
3376 6250 17	320x100x240	14

With universal joint



Extension rod

Part Number	Length
	m
3378 0050 55	0.5

Oil flow divider

Model	Part Number	Max oil flow
		l/min
LFD 20	1801 1632 29	60